

## Langara at a Glance: Fall Term

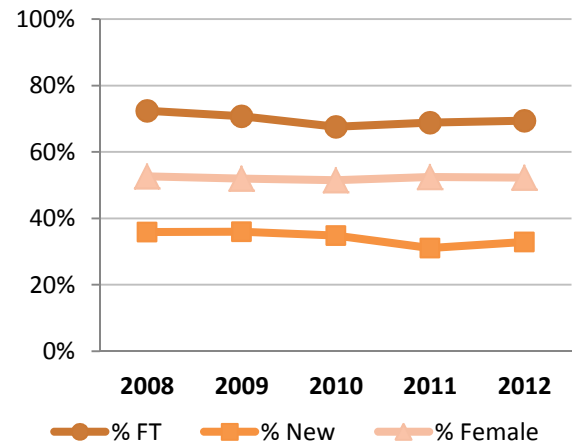
### Fall Term Head Count Enrolment by Program\*

Program Area	Program	200830	200930	201030	201130	201230	
<b>University Transfer</b>	Aboriginal Studies	18	19	13	18	31	
	Arts & Science, General	5,996	6,806	7,143	7,330		
	Arts, General					2,530	
	Science, General					933	
	Social Science, General					376	
	Field Studies	38	22	37	30		
	Asian Studies					59	
	Biology					188	
	Canadian Studies					10	
	Chemistry					35	
	Classical Studies					18	
	Commerce	26	9	0	0	974	
	Computer Science					192	
	Creative Writing					53	
	Dietetics					99	
	Ecology					8	
	Engineering Transfer	10	16	29	42	31	
	English					140	
	Environmental Studies					104	
	Family Studies					41	
	Geography					63	
	Health Sciences					341	
	History					81	
	Kinesiology					420	
	Latin American Studies					11	
	Leisure Studies					10	
	Mathematics					72	
	Peace and Conflict					59	
	Philosophy					34	
	Physics					33	
	Psychology					400	
	Women's Studies					29	
	<b>Baccalaureate</b>	Bachelor of Science in Nursing	698	679	686	580	503
		Nursing Exchange					5
Bachelor of Business Administration		528	494	542	549		
BBA: Accounting						196	
BBA: Business Management						230	
BBA: Int'l Business Management						5	
BBA: Marketing Management						123	
Bachelor of Recreation Management			20	34	60	45	
<b>Career</b>	Accounting	5	2	2	0	7	
	Applied Urban & Rural Planning	39	46	40	38	16	
	Applied Computer Science & Technology	0	0	0	0	52	
	Business Management	24	5	6	1	18	
	Computer Studies	25	23	25	28	28	
	Criminal Justice	94	103	113	96	104	
	Design Formation	38	55	60	57	60	
	Financial Management	19	6	1	0	4	
	Fine Arts	146	153	156	163	142	
	International Business Management	7	1	1	1	0	
	Internet/Web Computing & Software Dev.	0	1	1	1	0	
	Journalism	63	59	60	52	66	
	Library & Information Technology	142	154	160	160	160	
	Management Information Systems	5	9	8	6	5	
	Marketing Management	21	6	1	0	4	
	Nutrition & Food Service Management	41	40	41	46	51	
	Prof Comp Science & Technology	0	0	0	0	1	
	Professional Photo Imaging	48	48	46	45	41	
	Publishing	31	30	31	30	30	
	Recreation	50	63	66	69	72	
Theatre Arts	69	72	72	73	66		
Web Technology	0	0	2	2	6		
<b>Vocational</b>	Early Childhood Education	87	88	100	92	93	
	Education Assistant	27	33	35	33	31	
	Social Services Worker	31	36	36	39	37	
<b>Grand Total</b>		<b>8,326</b>	<b>9,098</b>	<b>9,547</b>	<b>9,641</b>	<b>9,576</b>	

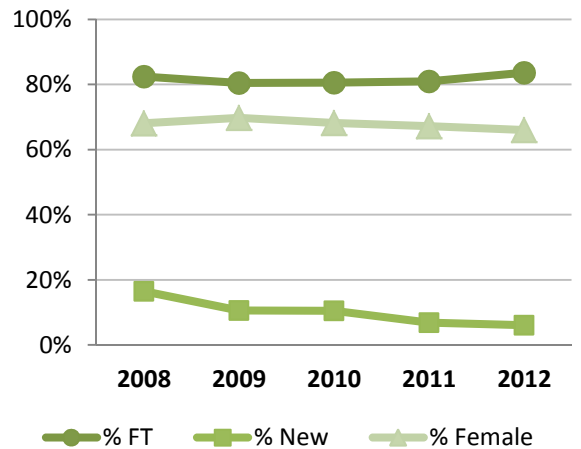
\* Langara changed the Program structure in Summer 2012. Blank cells denote programs not available in that term. Cells containing zeros represent programs that were available, but did not have any registrants. Large increases in registration indicate programs that used to register students under general Arts & Science.

## Langara at a Glance: Fall Term

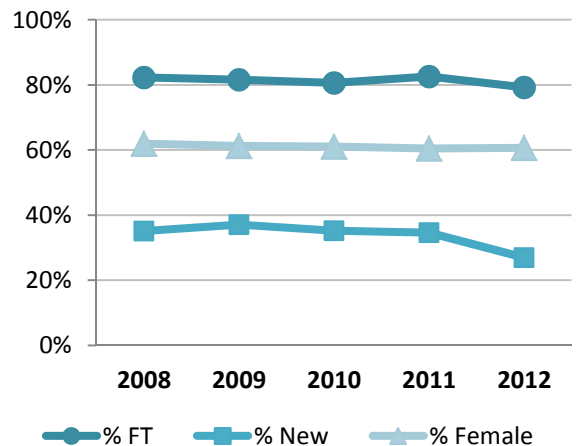
University Transfer Program Students					
	2008	2009	2010	2011	2012
Total # of Students	6,052	6,847	7,193	7,378	<b>7,375</b>
Full-time	4,382	4,843	4,860	5,079	<b>5,123</b>
Part-time	1,670	2,004	2,333	2,299	<b>2,252</b>
New	2,173	2,467	2,505	2,294	<b>2,425</b>
Returning	3,879	4,380	4,688	5,084	<b>4,950</b>
Female	3,185	3,562	3,708	3,868	<b>3,858</b>
Male	2,866	3,285	3,485	3,510	<b>3,513</b>
International	601	719	722	691	<b>805</b>
Aboriginal	97	81	92	89	<b>93</b>
Average Course Load	3.1	3.1	3.0	3.0	<b>3.0</b>
Average Age	22.0	22.0	21.9	21.8	<b>21.8</b>



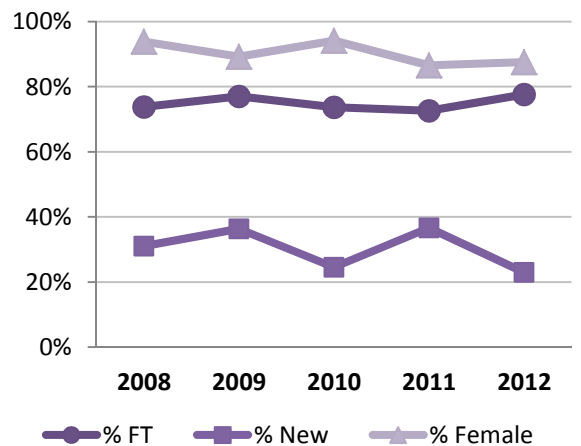
Baccalaureate Program Students					
	2008	2009	2010	2011	2012
Total # of Students	1,226	1,193	1,262	1,189	<b>1,107</b>
Full-time	1,011	960	1,017	962	<b>925</b>
Part-time	215	233	245	227	<b>182</b>
New	202	126	133	82	<b>67</b>
Returning	1,024	1,067	1,129	1,107	<b>1,040</b>
Female	835	832	860	799	<b>731</b>
Male	391	361	402	390	<b>376</b>
International	41	47	47	53	<b>38</b>
Aboriginal	15	13	17	16	<b>12</b>
Average Course Load	3.3	3.3	3.3	3.2	<b>3.3</b>
Average Age	23.6	24.2	24.3	24.6	<b>24.8</b>



Career Program Students					
	2008	2009	2010	2011	2012
Total # of Students	903	901	921	910	<b>933</b>
Full-time	743	735	742	751	<b>739</b>
Part-time	160	166	179	159	<b>194</b>
New	317	334	324	315	<b>251</b>
Returning	586	567	597	595	<b>682</b>
Female	559	552	562	550	<b>566</b>
Male	344	349	359	360	<b>367</b>
International	20	11	15	15	<b>29</b>
Aboriginal	11	14	15	21	<b>18</b>
Average Course Load	4.3	4.1	4.0	4.0	<b>3.8</b>
Average Age	25.6	26.1	26.4	26.1	<b>25.9</b>



Vocational Program Students					
	2008	2009	2010	2011	2012
Total # of Students	145	157	171	164	<b>161</b>
Full-time	107	121	126	119	<b>125</b>
Part-time	38	36	45	45	<b>36</b>
New	45	57	42	60	<b>37</b>
Returning	100	100	129	104	<b>124</b>
Female	136	140	161	142	<b>141</b>
Male	9	17	10	22	<b>20</b>
International	1	1	2	3	<b>2</b>
Aboriginal	3	7	8	4	<b>3</b>
Average Course Load	5.4	5.5	5.2	5.2	<b>5.6</b>
Average Age	26.4	29.1	28.0	28.4	<b>29.0</b>

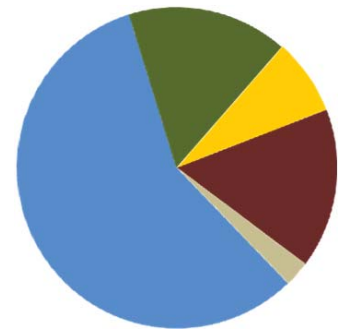


Total Enrolment					
	2008	2009	2010	2011	2012
Total Enrolment	8,326	9,098	9,547	9,641	<b>9,576</b>

# Langara at a Glance: Fall Term

## Langara Regular Studies Students by Region

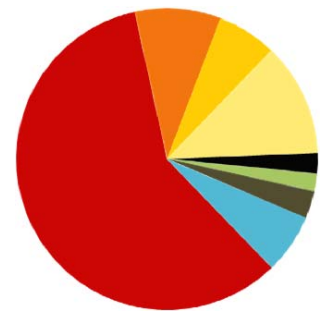
Region	2008	2009	2010	2011	2012	2012 %
Vancouver	5,064	5,580	5,633	5,503	5,231	57%
Richmond	1,057	1,137	1,335	1,457	1,479	16%
Burnaby	675	715	729	730	700	8%
North Vancouver	129	141	151	148	162	2%
West Vancouver	41	49	44	45	51	1%
Surrey	270	276	334	345	324	4%
Delta	223	288	316	328	356	4%
New Westminster	215	232	253	259	248	3%
Other Lower Mainland	309	311	361	348	325	4%
Other B.C.	169	210	214	255	233	3%
Other Provinces	59	74	85	97	102	1%



- Vancouver
- Richmond
- Burnaby
- Other Lower Mainland
- Other B.C.

## International Students by Country of Origin (credit programs only)

Country	2008	2009	2010	2011	2012	2011 %
China	280	353	405	380	496	57%
Korea	87	100	79	83	78	9%
Japan	78	72	61	61	54	6%
Hong Kong	40	53	41	34	30	3%
Taiwan	30	24	27	26	22	3%
SE Asia/S. Pacific	29	23	22	22	26	3%
Indonesia	25	23	27	24	25	3%
Middle East	14	28	22	19	16	2%
India	14	14	14	18	18	2%
Europe	11	21	19	21	25	3%
USA/Mexico	23	33	31	27	28	3%
Central/S. America	12	10	17	23	26	3%
Other	14	12	16	15	17	2%
Unknown	6	12	5	9	13	1%
<b>Total</b>	<b>663</b>	<b>778</b>	<b>786</b>	<b>762</b>	<b>874</b>	<b>100%</b>



- China
- Korea
- Japan
- Other Asia
- India
- Middle East
- Europe
- Americas

## Fall 2012 Age Distribution of Regular Studies Students

Program Area	<18	18-24	25-34	35-44	45+
University Transfer	345	5,834	961	165	70
Baccalaureate	4	684	347	60	12
Career	22	542	238	72	59
Vocational	1	54	74	18	14
<b>% of All RS Students</b>	<b>4%</b>	<b>74%</b>	<b>17%</b>	<b>3%</b>	<b>2%</b>
Continuing Studies*	1,179	800	1,173	826	986
<b>% of All CS Students*</b>	<b>24%</b>	<b>16%</b>	<b>24%</b>	<b>17%</b>	<b>20%</b>

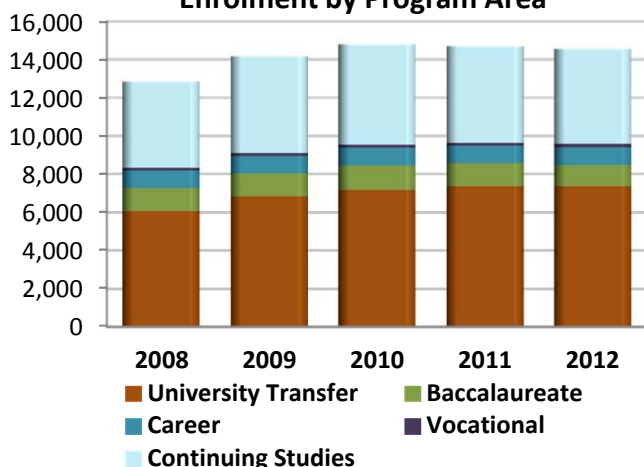
## Continuing Studies Students

	2008	2009	2010	2011	2012*
Total # of CS Students	4,521	5,074	5,238	5,062	4,966
Female	2,683	3,025	3,132	3,035	2,953
Male	1,896	2,046	2,103	2,027	2,013
Unknown	0	3	3	0	0
Average Age	29.6	30.3	30.4	30.4	30.0

\*Because Continuing Studies enrolls students throughout the term, complete data is not available for the current term. This data represents approximately 3/4 of the current term.

Some CS students may also be registered in Regular Studies.

## Enrolment by Program Area



## Current Term Age by Program Area

