

Summer Term Head Count Enrolment by Program

Program Area	Program	2007	2008	2009	2010	2011
Academic	Arts & Science, General	3,094	3,129	3,543	3,824	3,912
	Field Studies: Archaeology	20				
	Field Studies: Greece			23		
	Field Studies: Haida Gwaii	12				
	Field Studies: Italy	31	22	23	16	26
	Field Studies: London Theatre					14
	Field Studies: New York Theatre			14	17	
	Field Studies: Religious Studies		21			
	Institute		20			
	Baccalaureate	Business Administration (BBA)	111	268	332	350
Nursing (BSN)		402	482	512	533	480
Recreation (BRM)				6	15	25
Career	Accounting		5	2	2	
	Applied Computer Science & Technology	3	1			
	Business Management	49	19	5	4	1
	Computer Studies	13	18	16	15	28
	Engineering Transfer	2	3	9	14	20
	Film Arts	27	19	23	16	28
	Financial Management	46	17	4		
	International Business Management	11	6	1	1	1
	Internet/Web Computing & Software Dev.	1			1	
	Library & Information Technlgy	21	33	31	40	28
	Management Information Systems	12	7	5	8	4
	Marketing Management	22	14	4		1
	Nutrition & Food Service Management	19	29	36	37	36
	Publishing	16	22	30	26	26
	Web Technology				1	1
Vocational	Early Childhood Ed: Special Education	15	15	16	14	12
	Early Childhood Education	43	55	43	54	48
Regular Studies Total		3,970	4,205	4,678	4,988	5,098
Continuing Studies*		3,048	3,325	3,347	3,914	

All program names are current as of the Summer 2011 College Calendar.

*Because Continuing Studies enrolls students throughout the term, complete data is not available for the current term. Some CS students may also be registered in Regular Studies.

Langara at a Glance: Summer Term

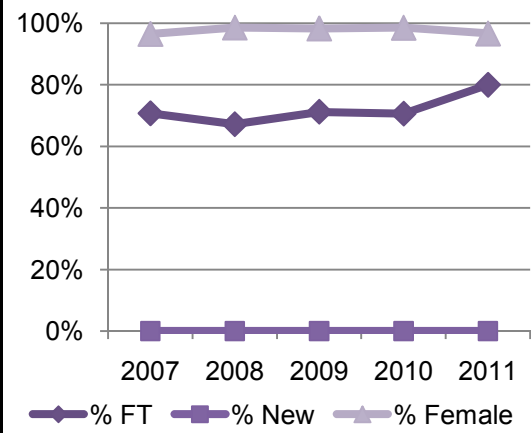
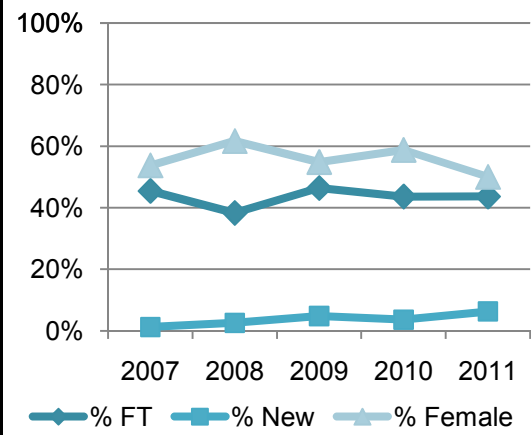
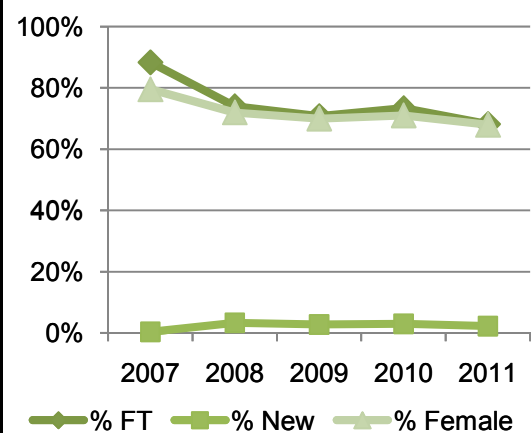
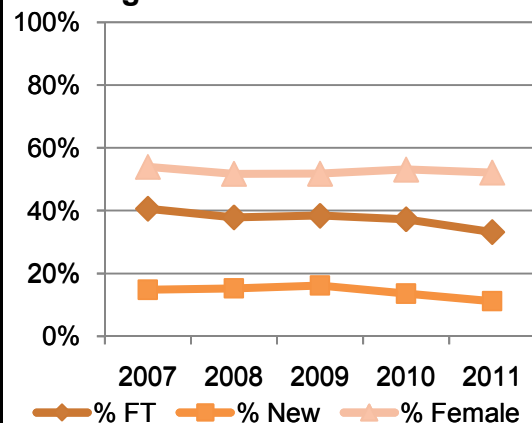
Arts & Sciences Program Students					
	2007	2008	2009	2010	2011
Total # of Students	3,157	3,192	3,603	3,857	3,952
Part-time	1,874	1,983	2,219	2,419	2,640
Full-time	1,283	1,209	1,384	1,438	1,312
New	468	487	583	525	442
Returning	2,689	2,705	3,020	3,332	3,510
Female	1,703	1,652	1,866	2,048	2,061
Male	1,454	1,540	1,736	1,809	1,891
International	410	412	493	541	545
First Nations	38	28	27	33	35
Average Course Load	2.3	2.2	2.2	2.2	2.1
Average Age	24.9	23.8	22.8	22.8	22.7

Baccalaureate Program Students					
	2007	2008	2009	2010	2011
Total # of Students	513	750	850	898	912
Part-time	60	195	248	239	290
Full-time	453	555	602	659	622
New	2	25	24	27	21
Returning	511	725	826	871	891
Female	408	540	595	638	620
Male	105	210	255	260	292
International	8	22	28	33	38
First Nations	3	8	7	7	9
Average Course Load	2.8	2.6	2.6	2.6	2.6
Average Age	27.0	25.5	24.5	24.6	24.5

Career Program Students					
	2007	2008	2009	2010	2011
Total # of Students	242	193	166	165	174
Part-time	132	119	89	93	98
Full-time	110	74	77	72	76
New	3	5	8	6	11
Returning	239	188	158	159	163
Female	130	119	91	97	87
Male	112	74	75	68	87
International	27	16	4	4	6
First Nations	3	3	5	5	3
Average Course Load	2.5	2.4	2.6	2.4	2.6
Average Age	28.3	30.3	30.4	31.0	29.2

Vocational Program Students					
	2007	2008	2009	2010	2011
Total # of Students	58	70	59	68	60
Part-time	17	23	17	20	12
Full-time	41	47	42	48	48
New	0	0	0	0	0
Returning	58	70	59	68	60
Female	56	69	58	67	58
Male	2	1	1	1	2
International	0	1	0	1	2
First Nations	1	1	1	4	4
Average Course Load	5.8	5.3	5.7	5.6	6.2
Average Age	26.8	26.4	26.4	27.4	27.1

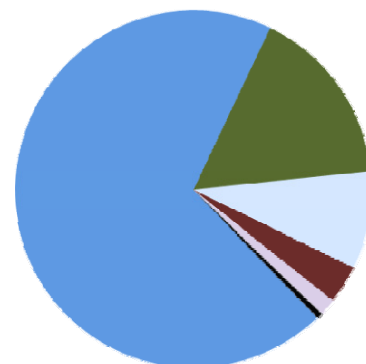
Total Term Enrolment	3,970	4,205	4,678	4,988	5,098
-----------------------------	--------------	--------------	--------------	--------------	--------------



Langara at a Glance: Summer Term

Langara Regular Studies Students by Region

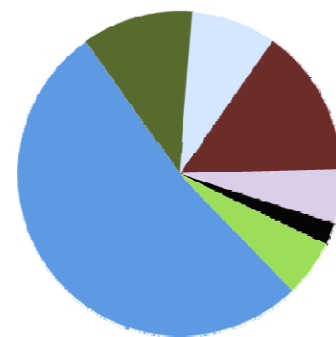
Region	2007	2008	2009	2010	2011
Vancouver	63.0%	62.9%	64.4%	61.4%	61.5%
Richmond	12.7%	13.0%	12.3%	13.4%	14.4%
Burnaby	8.1%	8.9%	8.5%	8.3%	7.9%
North Vancouver	1.7%	1.6%	1.4%	1.4%	1.2%
West Vancouver	0.8%	0.4%	0.6%	0.4%	0.6%
Surrey	3.8%	3.6%	3.3%	3.7%	4.0%
Delta	1.6%	1.5%	2.1%	2.4%	2.3%
New Westminster	2.7%	3.0%	2.4%	2.5%	2.7%
Other Lower Mainland	3.3%	3.3%	3.3%	3.8%	3.1%
Other B.C.	1.7%	1.5%	1.3%	1.6%	1.4%
Other Provinces	0.6%	0.4%	0.4%	0.7%	0.5%



- Vancouver
- Richmond
- Burnaby
- Other Lower Mainland
- Other B.C.
- Other Provinces

International Students by Country of Origin (credit programs only)

Country	2007	2008	2009	2010	2011	2011%
China	176	171	210	290	307	52%
Korea	42	55	66	65	65	11%
Japan	76	62	56	49	50	8%
Hong Kong	24	29	32	30	31	5%
Taiwan	23	25	17	15	20	3%
SE Asia/S. Pacific	23	25	19	15	17	3%
Indonesia	21	18	15	26	19	3%
Middle East	7	11	8	27	12	2%
India	4	9	3	10	15	3%
Europe	12	9	4	9	13	2%
USA/Mexico	9	10	14	19	16	3%
Central/S. America	6	6	6	9	15	3%
Other	3	6	6	12	6	1%
Unknown	19	15	69	3	5	1%
Total	445	451	525	579	591	100%



- China
- Korea
- Japan
- Other Asia
- Americas
- Europe
- Other

Summer 2011 Age Distribution of Regular Studies Students

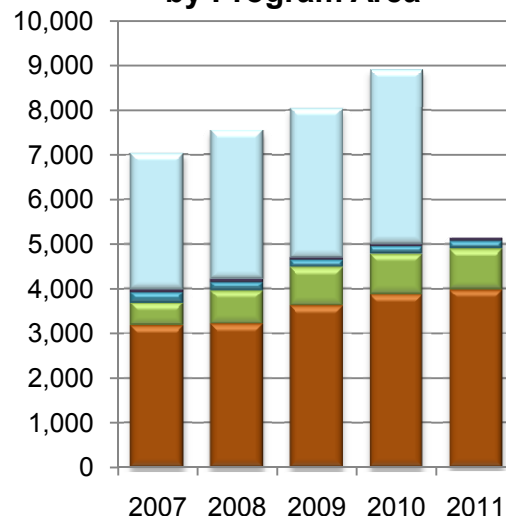
Program Area	<18	18-24	25-34	35-44	45+
Academic	8	3,145	619	123	57
Baccalaureate	1	598	265	35	13
Career	0	83	44	27	20
Vocational	0	24	27	6	3
% of All Students	0%	76%	19%	4%	2%

Continuing Studies Students*

	2007	2008	2009	2010
Total # of CS Students	3,048	3,325	3,347	3,914
Female	1,895	2,076	2,016	2,461
Male	1,153	1,249	1,331	1,453

*Because Continuing Studies enrolls students throughout the term, complete data is not available for the current term.

Summer Enrolment by Program Area



- Arts & Sciences
- Baccalaureate
- Career
- Vocational
- CS